

The Hitchhiker's Guide to the BugWorld

The following Help Topics are available:

[The Story](#)

[Gameplay](#)

[Options](#)

[MIDI Setup](#)

[Legal Stuff](#)

[Credits](#)

[Order Form](#)

For Help on Help, Press F1

The Story

A long time ago in a galaxy far, far away...

A bizarre combination of Dark Force and just plain bad luck produced a ghastly danger zone in the center lane of the Galaxy SuperHighway. And that zone happened to be the home of a spacefaring bug race that could only have been created by a god under silly schedule. The SpaceBug are the cutest and the most innocent-looking life form in the universe. But don't be fooled. With their pseudo-fuzzy-intelligent mind and thicker-than-Volvo armor, the SpaceBug will fight like a Klingon without any sense of Honor.

You, an award-winning BugBuster, are on a you-shoot-them-or-they-eat-you-alive mission to save the civilization, before it's too late!

Our fate lies in your hands... Don't panic!

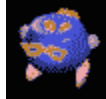
Gameplay

The BugBlaster



Your ship is the BugBlaster, a small but marvelous, blood-thirsty battle machine, equipped with a Yugo thruster for movement, a Creative Lab blaster for destruction, three Bubble bombs for pure chewing satisfaction, and three Wind shields to absorb collisions.

The Rotating Bug



Space-rotating dance is the meaning of their life. However their tendency of ignoring the traffic light is very annoying.

The Blinking Bug



Frequently features in the centerfold of the Playbug magazine, this is the sexiest bug in the Bugworld. Not my style!

The Kamikaze Bug



You don't need a Grand Jury to find this mind-bogglingly psycho bug should be put off from the society forever. Try not to get into their way.

The Ninja Bug



With their black-market Hurricane anti-matter missile, this fully-loaded dude is the No. 1 pick for the Rookie Criminal Bug of the Year. Put on your seat belt before going after them.

The Journey

Shoot anything that moves. (Like you really care. Just shoot!)

The Mighty Escape

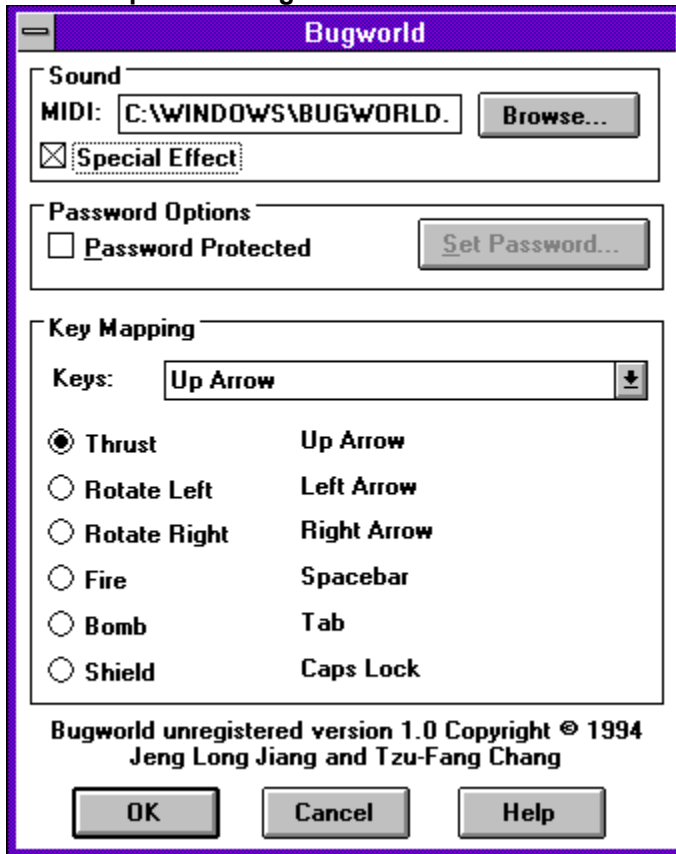
Use "Esc" key to change your personality module from a tourist to a **SPACE COWBOY!**

Rest in Peace

Sometime it's just not your day. You have three ships to begin with. Once you lose all of them(what a shame), you are returned to the beginning of that level.

Options

The Options dialog box



MIDI

If you have a MIDI-capable device, you can specify a MIDI file as the background music. Default is none.

Special Effect

Default is disabled.

When to turn it off

1. Your computer has only PC speaker or Adlib sound card.
2. Your computer is too slow and you like to play with Bugs.
3. Your boss threatened to fire you.

Key Mapping

Click on the desired action radio button and select a key from the "Keys" drop down list box.

Default keys are shown in the above dialog box.

Use "Esc" key to switch from demo to play mode.

Legal Stuff

Bugworld

Copyright 1994 by **Jeng Long Jiang** and **Tzu-Fang Chang**

Basically use Bugworld at your own risk. We assume no liability for consequential or incidental damages which may result from the use of Bugworld.

Credits

Jeng Long Jiang - programming

Tzu-Fang Chang - visual effects

Jia-Jyi Lian - graphics special assistant and programming consultant

Ying-Mei Lin - suggestion and our biggest fan

Yu-Shang Lin DVM - star field development

Alfred Ke - special help on 3D graphics

Eric Huang - background music

Order Form

BugWorld Order Form

Select "File-Print Topic" from the menu bar to print this form.

The registered user will receive a new set of graphics with some new bugs and space bases.

Name: _____

Company: _____

Address: _____

City: _____ State: _____

Country: _____ Post/Zip Code: _____

Where did you obtain the program from:

Payments:

Payments must be in US Dollars.

BugWorld.....	\$12.00 x _____	copies = \$ _____
Overseas shipping.....		\$3.00 + \$ _____
Total.....		\$ _____

specify your disk size:
_____ 5.25" _____ 3.5"

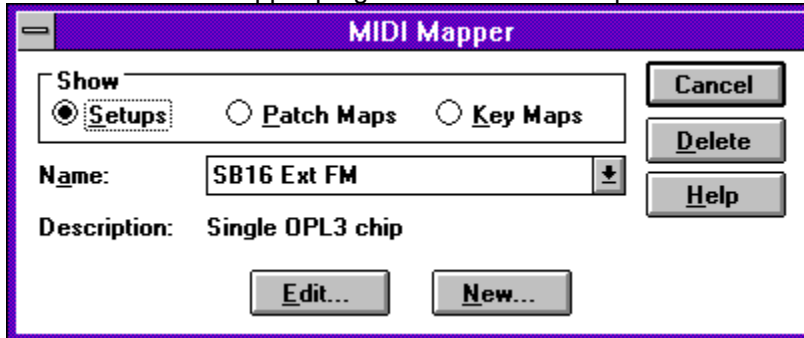
Make your check payable to Tzu-Fang Chang, and send it to:

P.O. Box 32003
San Jose, CA 95152-2003
USA

MIDI Setup

If you can't hear the background MIDI music. You might be able to correct this problem by following these steps.

Run the MIDI Mapper program from the control panel.



Click on "Edit..." button. You'll see a dialog with similar MIDI output name depending on your sound card. Setup the MIDI channel from 1 to 10.

